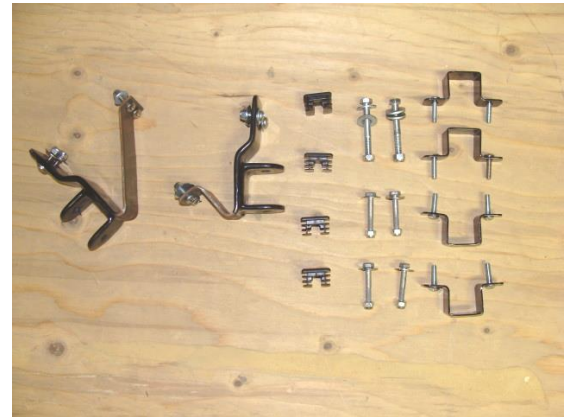




## Otter Bench Instructions

Note: Installing bench before attaching the fish house will make the installation much easier.

Parts included:



Tools required:

Drill

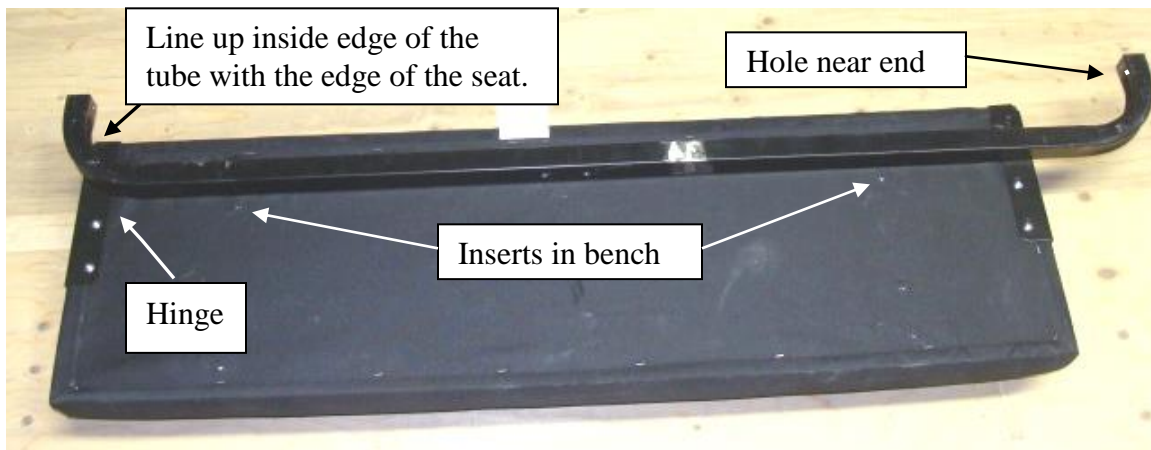
9/32 drill bit

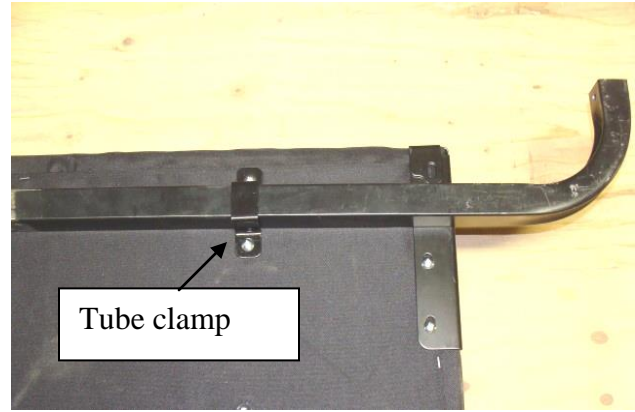
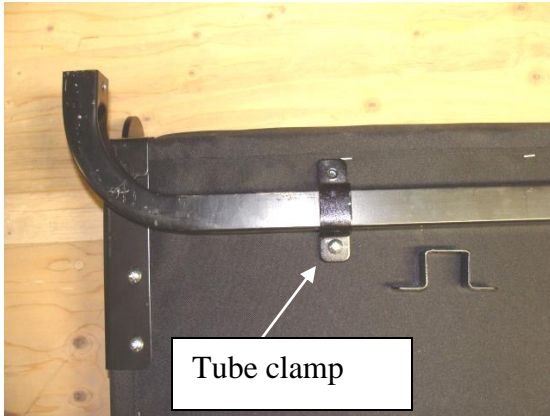
7/16 wrench and socket and ratchet

1/2 wrench and socket and ratchet

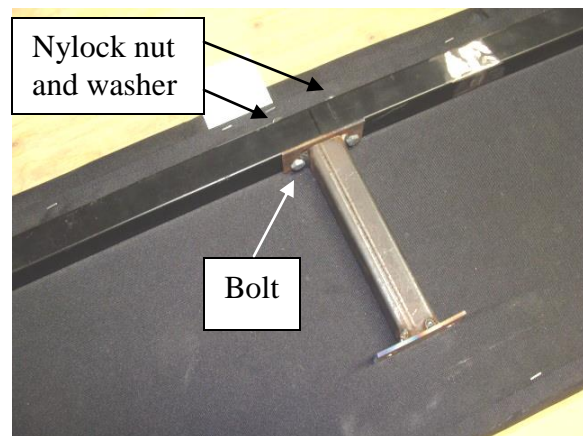
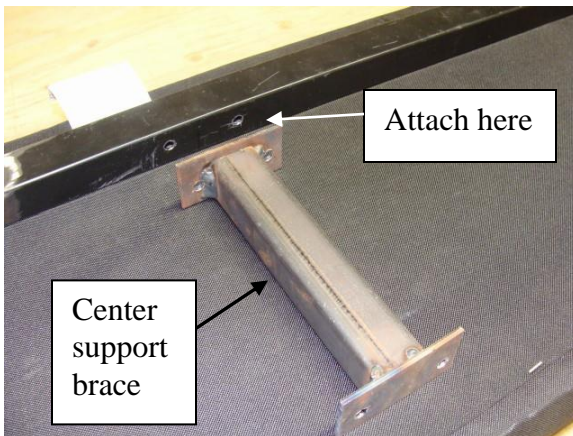
Phillips screwdriver

1. Layout all parts. Turn bench over so the bottom is facing upward and the hinges are facing away from you. Place the curved support bar with the two holes near the end on the bench. On the left side, line up the edge of the seat with the inside edge of the tube. Place the tube clamp bracket over the bar and attach with the Phillips head machine screws by threading them into the inserts in the bottom of the bench. Attach brackets in two places on the support bar.

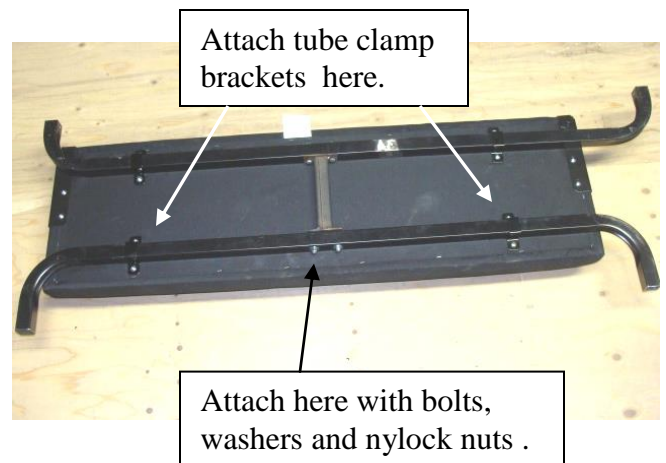
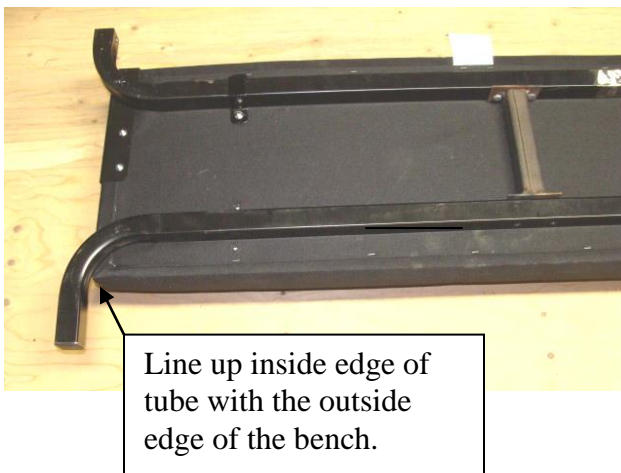




2. Attach the center support brace to the bench tube with the  $\frac{1}{4}$  x 2 bolts, washers, and nylock nuts.

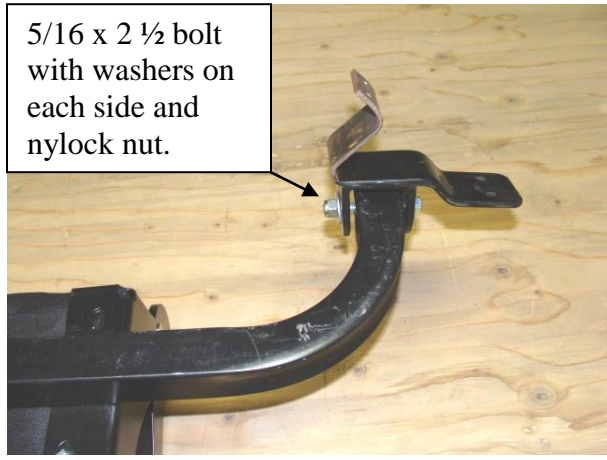
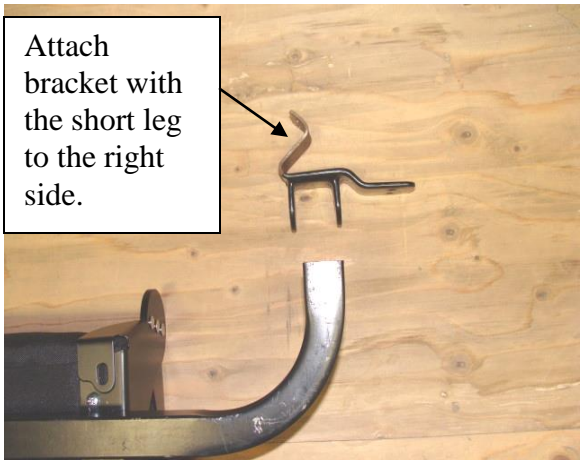
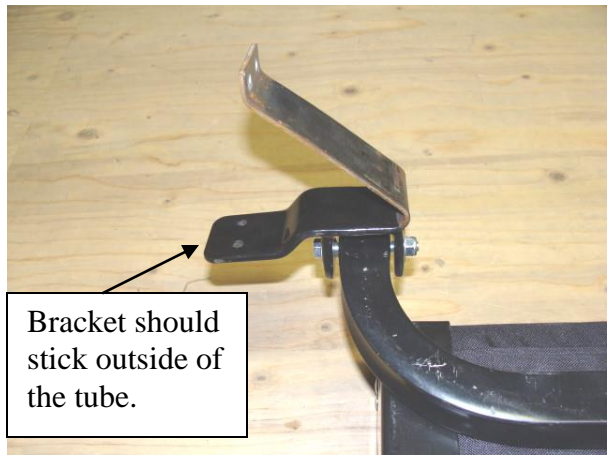
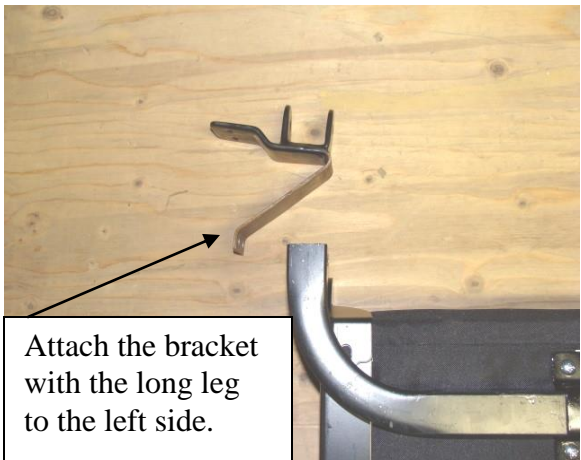


3. Place the second shorter tube on the bench as shown in the picture below. On the left side, line up the inside edge of the tube with the outside edge of the bench. Adjust it as necessary so the holes in the main tube line up with the holes in the center support brace. Attach with the  $\frac{1}{4}$  x 2 bolts, washers and nylock nuts. Also attach the tube clamp brackets to the bottom of the bench.

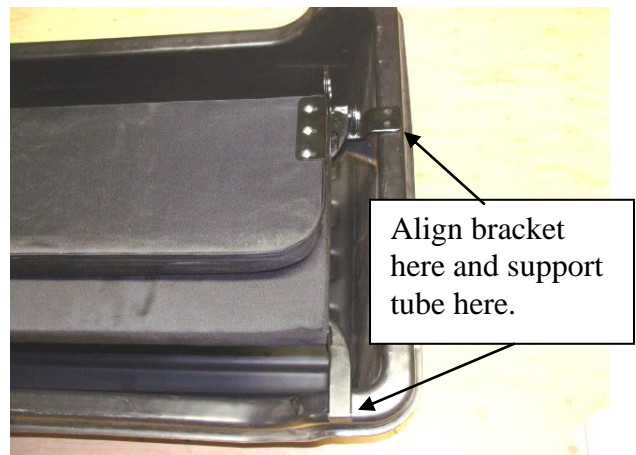
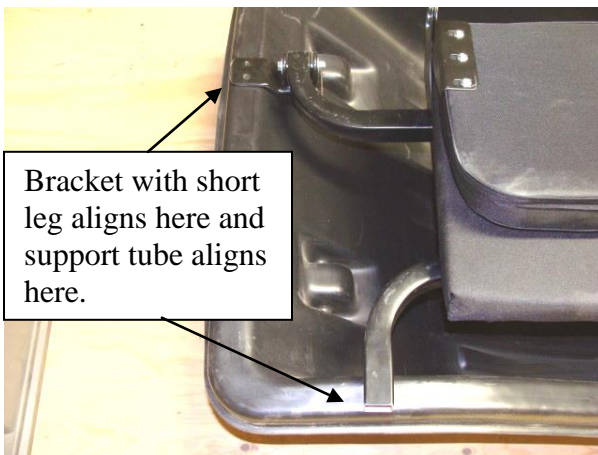




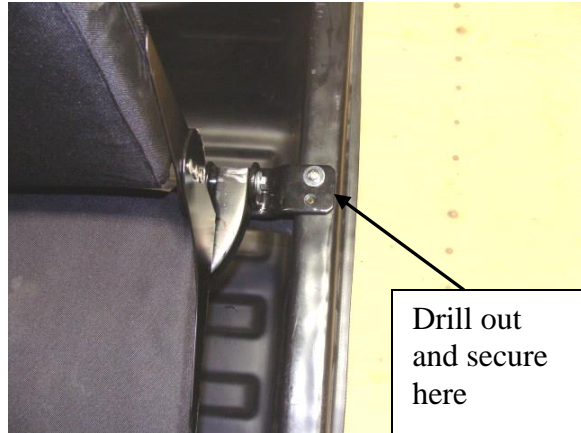
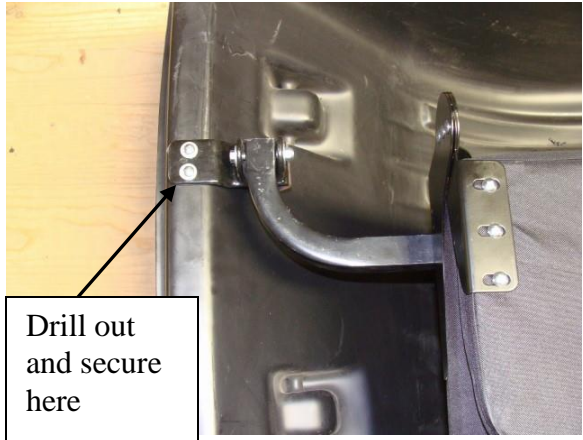
4. Attach sled brackets to the rear main tube using the 5/16 x 2 1/2 bolts, washers and nylock nuts.



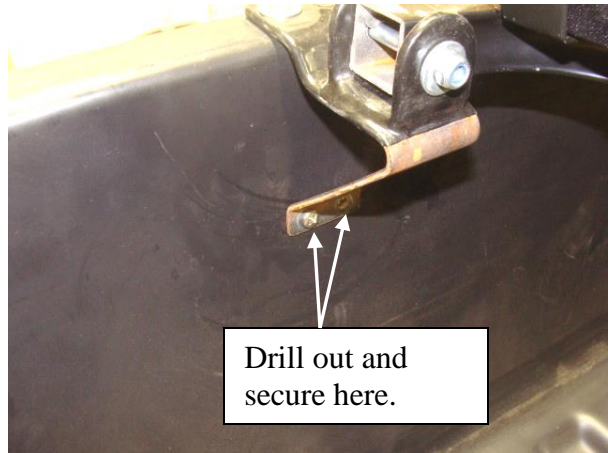
5. Turn bench over from left to right, and align it on the sled as shown. The brackets and the main support tube should line up on the edge of the sled,



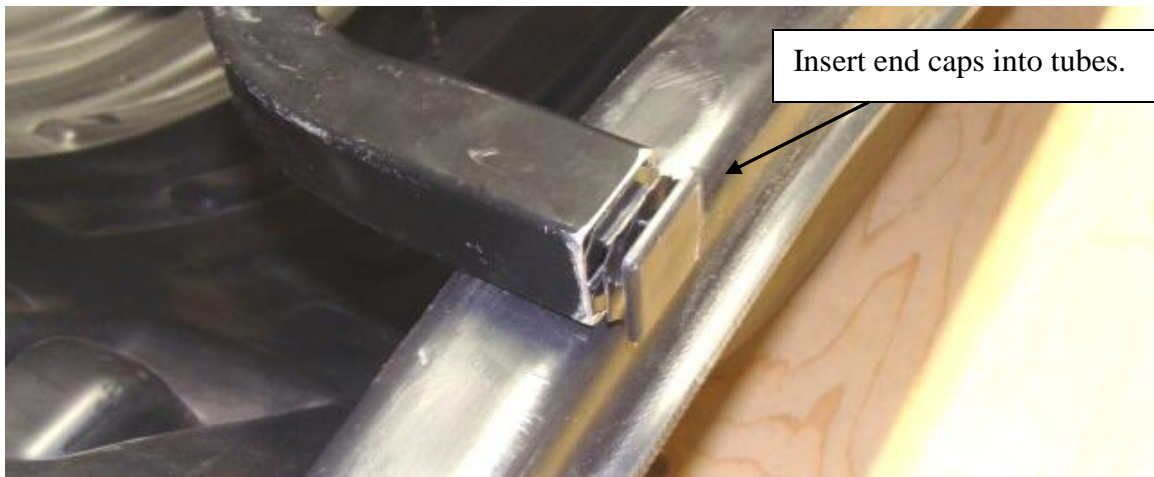
6. After the bench is properly aligned drill out one of the top holes in the front bracket and and secure with the ¼ x 1 bolt, washers and nylock nut. The washers should go on both the top and the bottom. Drill out the second hole and secure. Repeat at the rear of the sled.



7. Drill out one of the lower holes in the front bracket and secure with the ¼ x 1 bolt, washer and nylock nut. The washer goes on the outside of the sled only. Drill out the second hole and secure. Repeat at the rear of the sled.



8. Insert end caps into the tubes in four places. Pound in until they are flush.







Completed bench is offset toward the rear of the sled to minimize tipping of the sled due to the front angle on the sled.

